



Tian Gombau

companyia de teatre

MY FATHER BURNED STONES

TECHNICAL CONDITIONS - PLANE



TIAN GOMBAU-Companyia de teatre

Camí primer canal, 15, A-1

12100 Castelló de la Plana-SPAIN

Telf.: +34-964.284.991 / +34-630.069.109

teatre@homedibuixat.com / www.homedibuixat.com

STAGE AREA

- Measures: 5m. wide x 4m. depth x 2,75m. height
- Black background

SPACE OPTIONS

1) SCENOGRAPHY AND AUDIENCE AT THE SAME LEVEL

- Measures scenic area: 5 m. wide x 4 m. depth x 2,75 m. height (adaptable measures)
- Measures public space: 6m x 6m
- The organization will have to provide 40 chairs and carpets / cushions (or similar) to sit the children on the floor. If small benches are available, 3 levels can be created: carpet-benches-chairs, for create a small step and improve the public visibility.

2) ITALIAN CONFIGURATION. Scenography on the stage and audience on the patio stalls. Recommended for small theaters (ideal with grandstand).

- Measures scene: 5 m. wide x 6 m. depth x 2,75 m. height (adaptable measures)

LIGHTING

- * See flat lights attached for PC
- 6 PC
- 4 profiles
- * A lights technician during set up and performances. If company has to come with a technician, this cost would be add to the budget.
- * Darkness in the room
- *Programable light console

SOUND

- 2 injection / DI boxes
- Room sound console
- 2 small self-amplified speakers (80 W or similar, jack or canon plug), or 2 normal speakers with an amplifier and a console.
- 1 shot of 220v on the stage

SET UP/ DISMANTLING

SET UP time: 3h (plan minimum 4h before the 1st performance)

DISMANTLING time: 1h

LENGTH OF THE SHOW

LENGTH: 35 min

Minimum 25 min between performances

AUDIENCE RECOMMENDED

75 children + teachers during school performances

100-110 people in family audiences

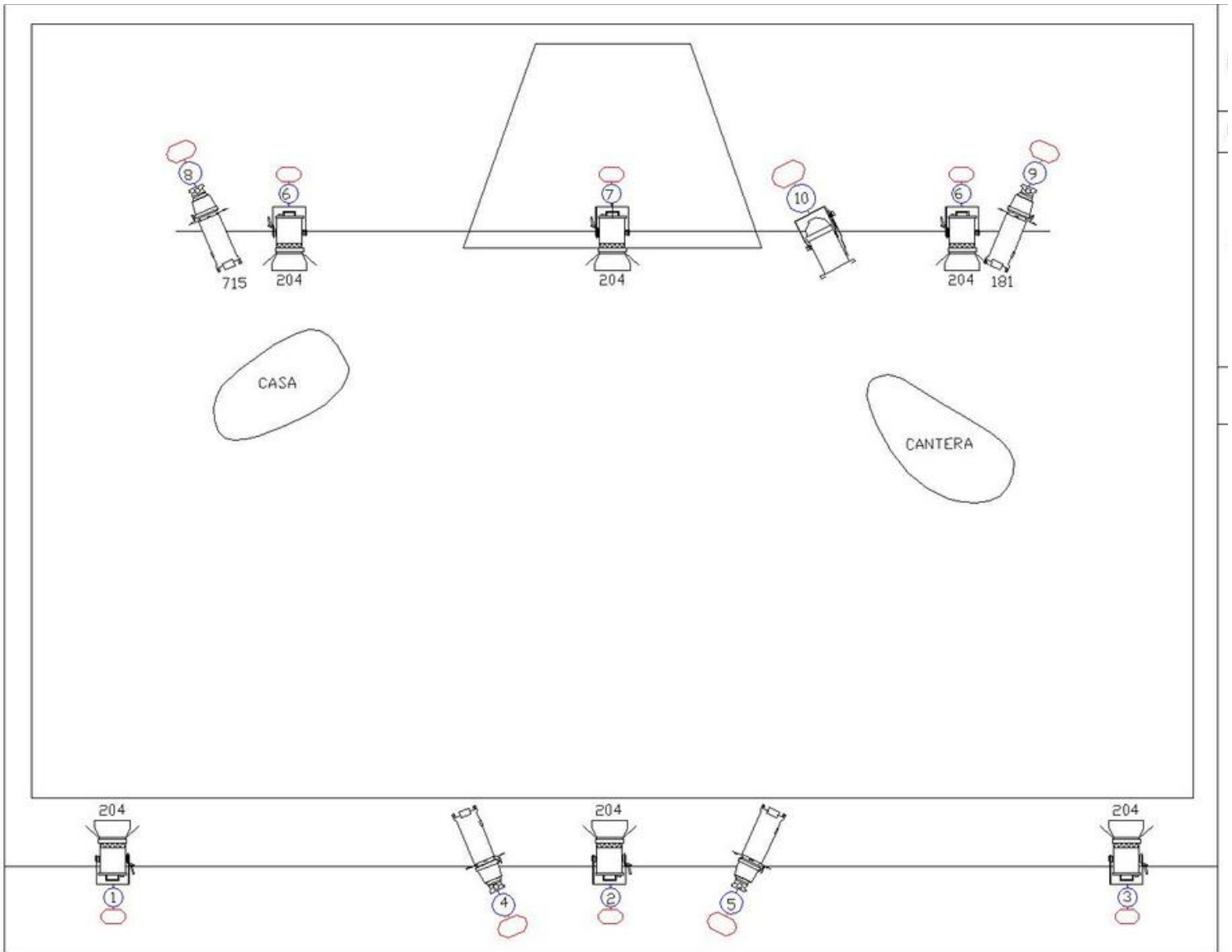
OTHER

- + The organization will facilitate to the actor a wireless microphone (discreet) only if performances have made in a big room.
- + An iron
- + Running water and shower with hot water and bath towel (if possible)
- + Representative of the organization since the arrival of the company until its departure
- + 1 bottle of water of 1'5 liter.

For security measures, the company will arrive minimum 36 hours before the first performance (in case the suitcases are lost during the flight). For reasons of volume and weight, public transport will not be used to transport luggage, such as the subway, train, bus ...

LIGHTING

BACKGROUND WHOLE



AUDIENCIA

KEY:



PC 1 KW



PROFILE 1 KW
15/30°



PAR 64 N°1
CP60 1 KW